



What's new

Spring 2025



Q Display

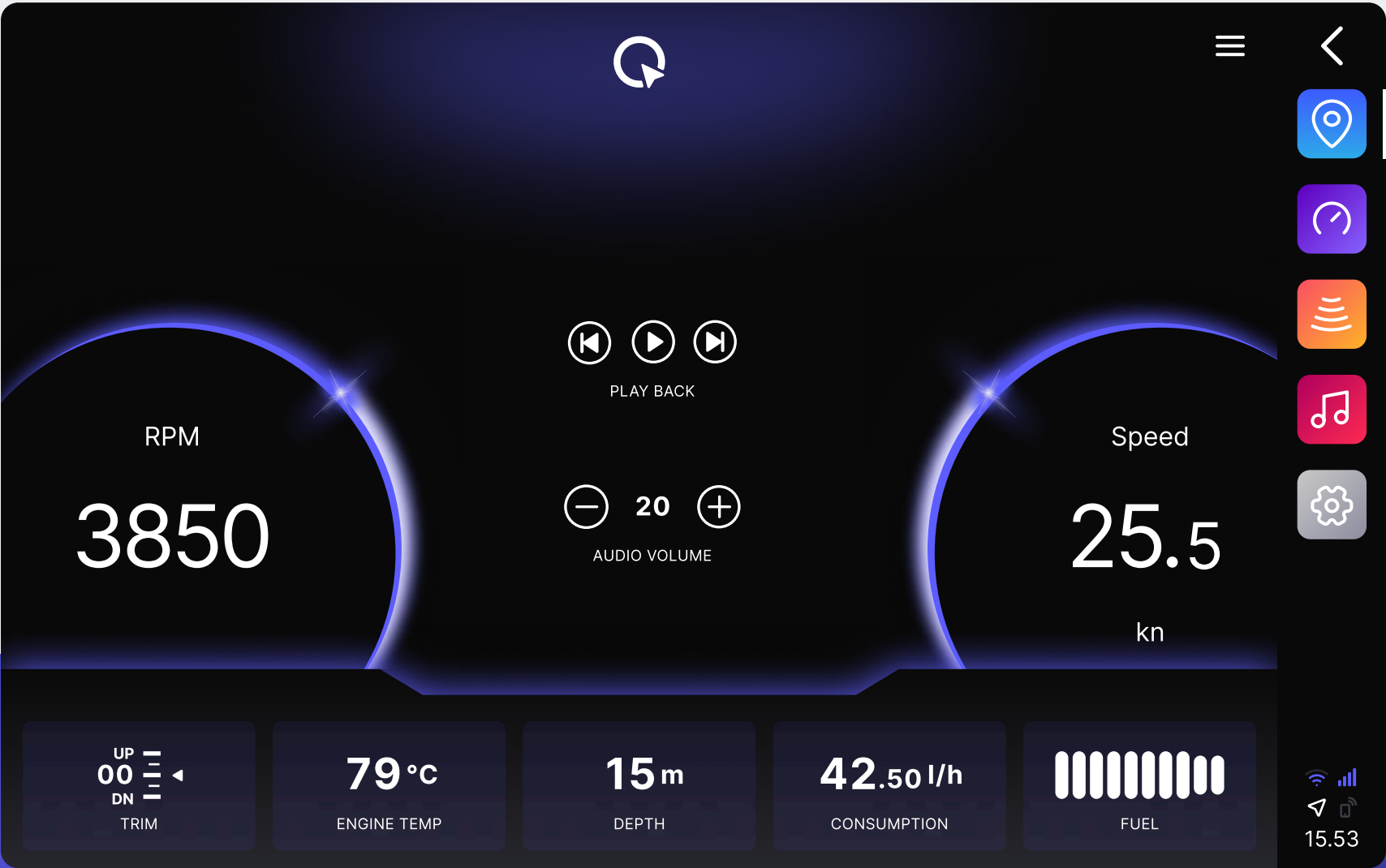
- New dashboard
- Enhanced chart application
- Multi-engine support
- New widgets and widget panels
- New user onboarding
- New integrations
- New fishfinders
- Other improvements...

Q App

- Notification center
- Important system information
- New languages
- Subscription for limitation areas in Norway
- Other improvements...



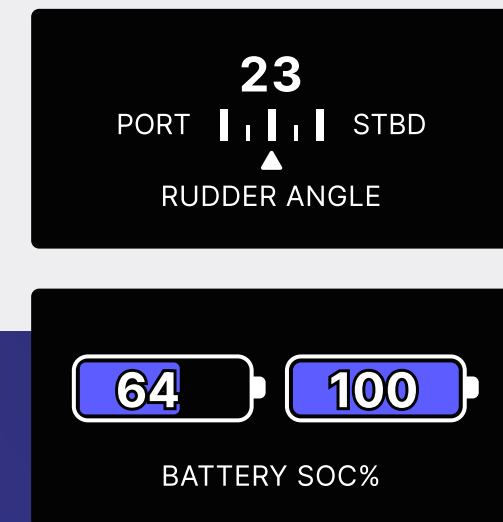
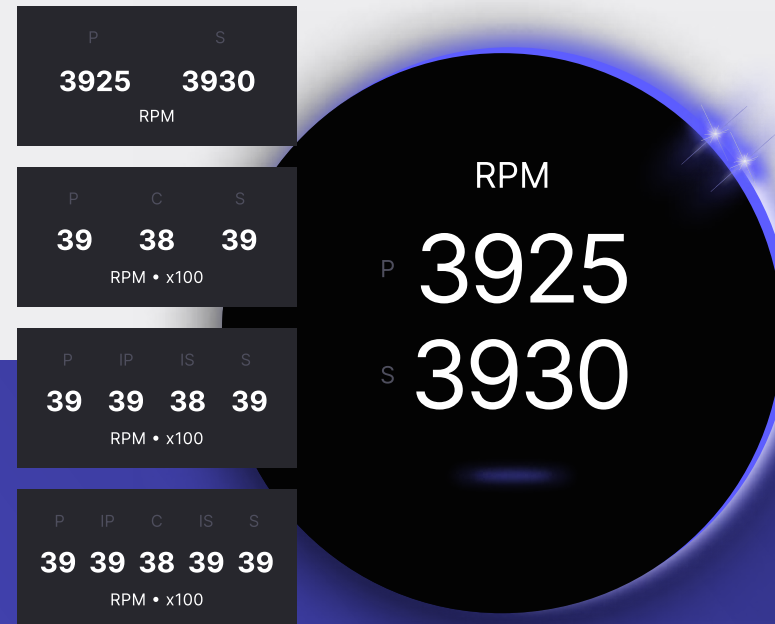
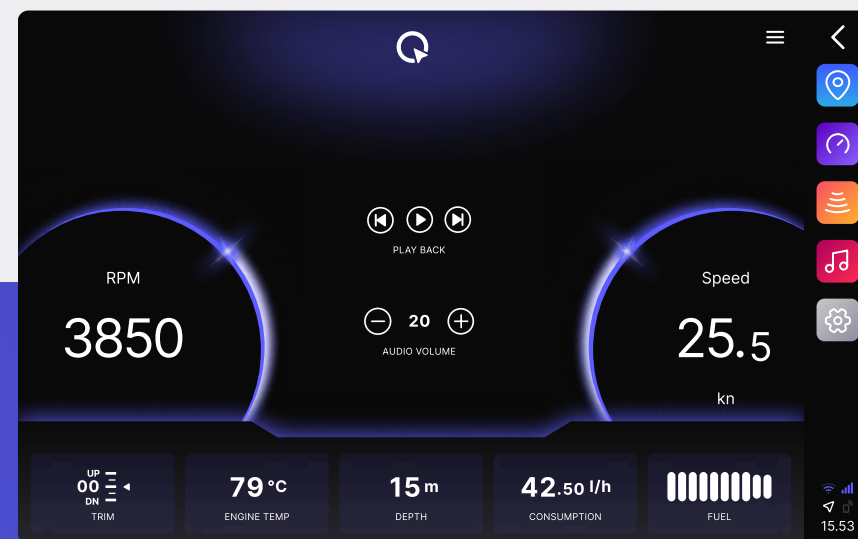
New dashboard



New look and feel

The redesigned dashboard offers a modern, fresh interface that enhances your boating experience.

New dashboard



Customizable bottom and middle widgets

The dashboard widget panels can now be tailored to display the most relevant data for you, both in the middle section and in the bottom panel.

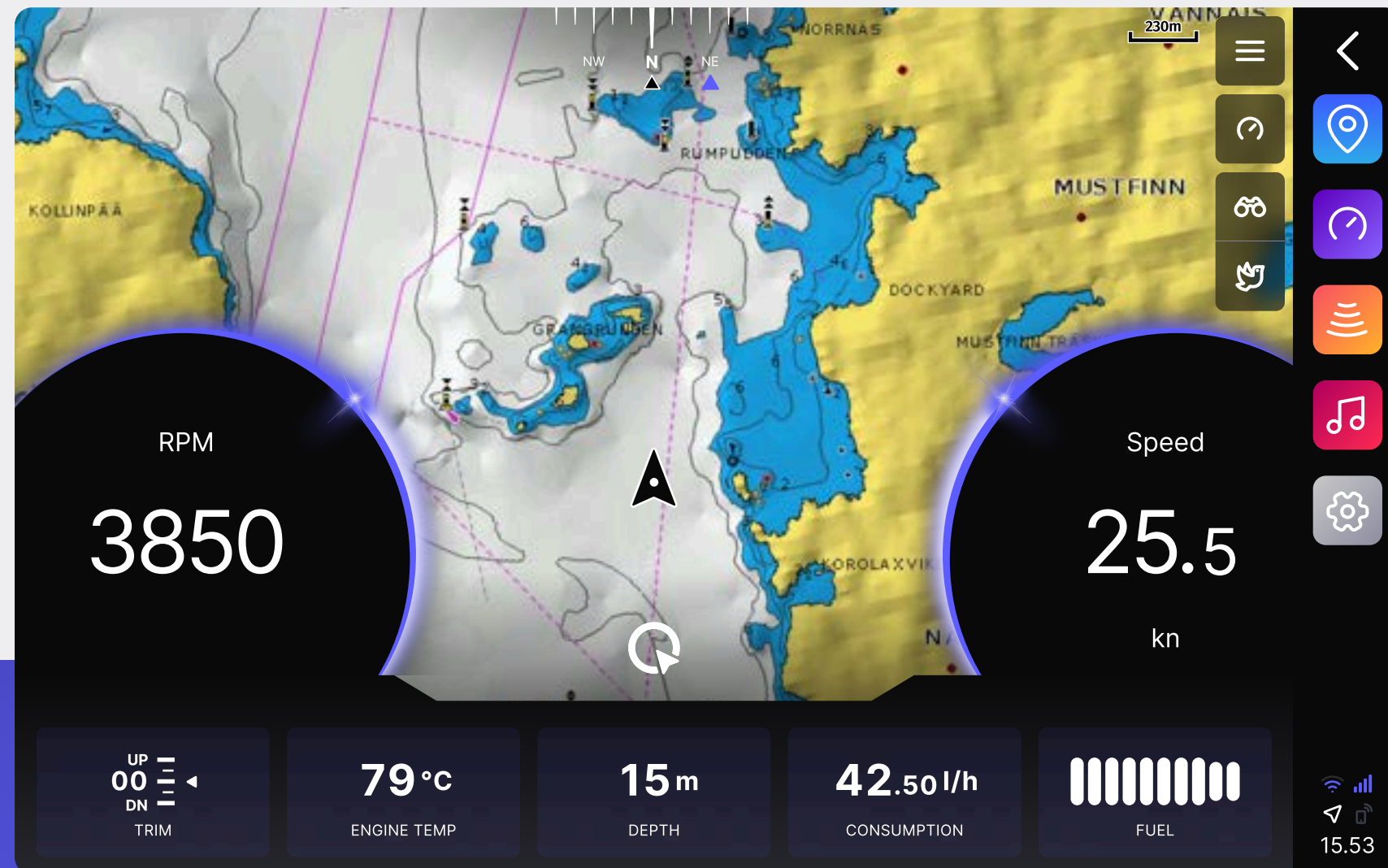
Multi-engine support

Enhanced protocol support allows users to configure and monitor up to five engines, ensuring seamless multi-engine integration.

New widgets

New widgets have been added to support multiple drive and house batteries, as well as to display rudder angle.

Enhanced chart application

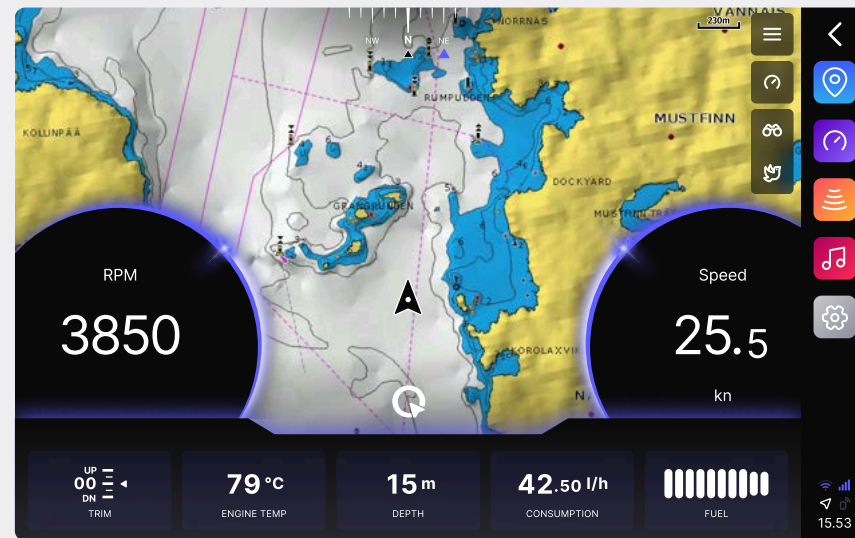


New chart overlay design

The updated chart application improves navigation by integrating essential engine data directly into the chart view. Users can easily monitor key metrics while staying focused on their route.

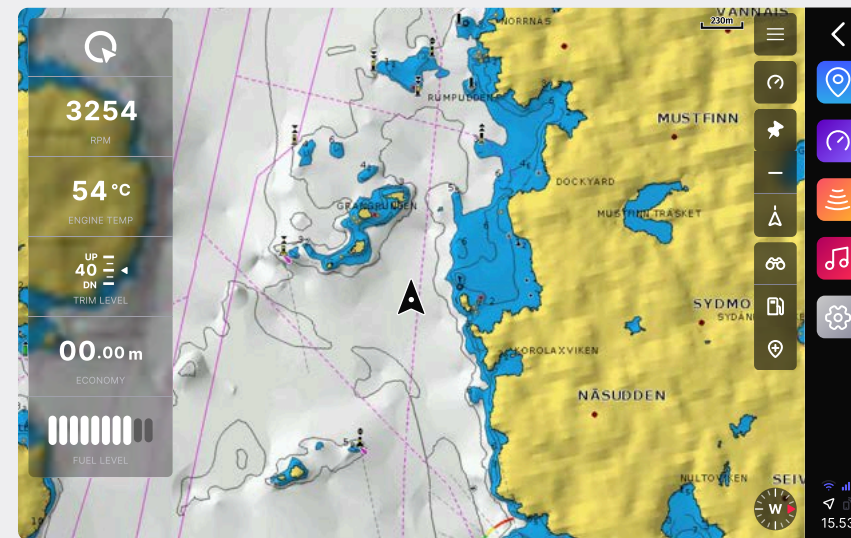
The interface also allows easy switching to full-screen chart mode when more visibility is needed.

Enhanced chart application



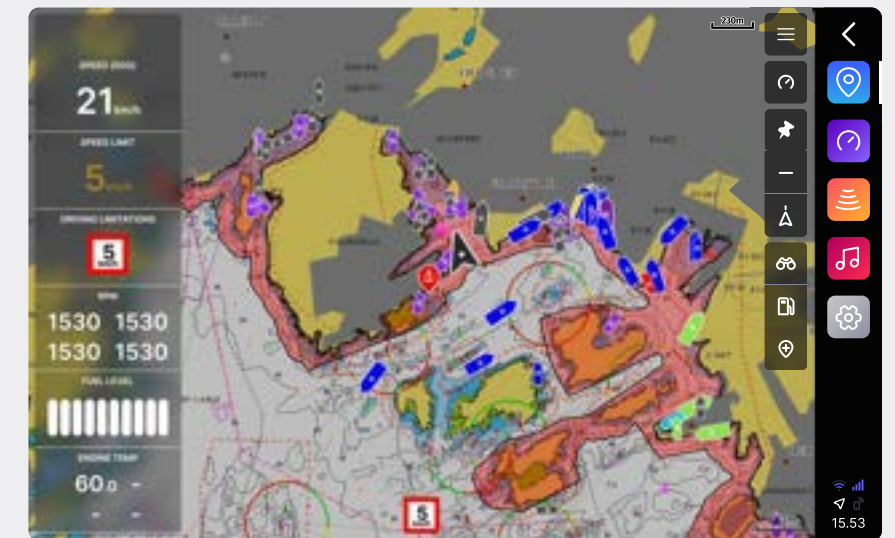
Overlay gauges and customizable widgets

Keep essential engine and navigation data visible on top of the chart, and customize widgets to show exactly what matters to you.



Easily switch to full chart

Tap the map at any time to hide overlay gauges and switch to a full-screen chart view. Easily toggle between views to stay focused on route planning and navigation.



Limitation areas for Norway

The subscription-based limitation area feature includes now the Norwegian speed and access restrictions directly on the chart.

Enhanced chart application



Disable overlay gauges

Lock the expanded chart view and keep the gauges hidden



Switch chart orientation

Switch between head-up and north-up modes



Minicompass

Red triangle: North

Letter in the middle: Your current heading



Anchor alarm improvements

Adjusted alarm handling to reduce false alarms



AIS functionality improvements

Improved tracking and handling of AIS targets

New user onboarding

Get onboard with Q

The updated onboarding flow provides a guided setup experience, ensuring users configure essential settings such as language, draft, engine type, and fuel tank capacity right from the start.

It also walks users through downloading the Q app and linking it to the display for seamless connectivity.

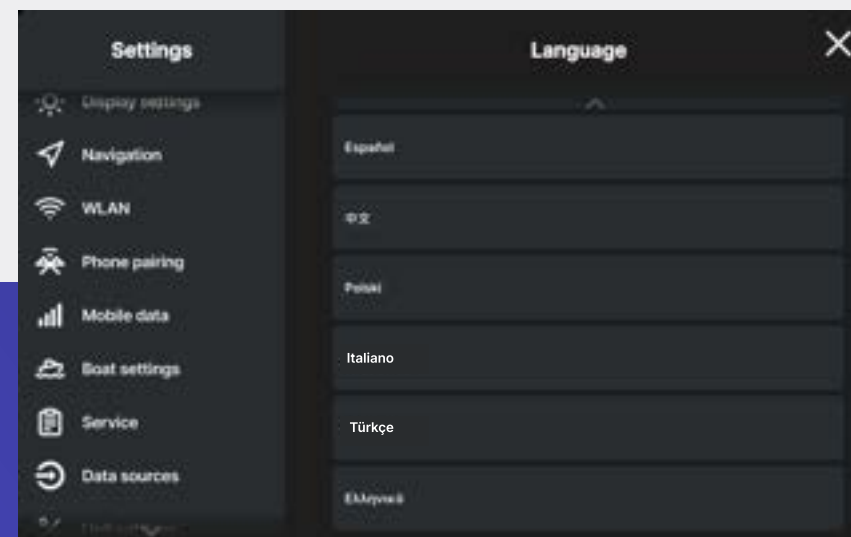


Other improvements



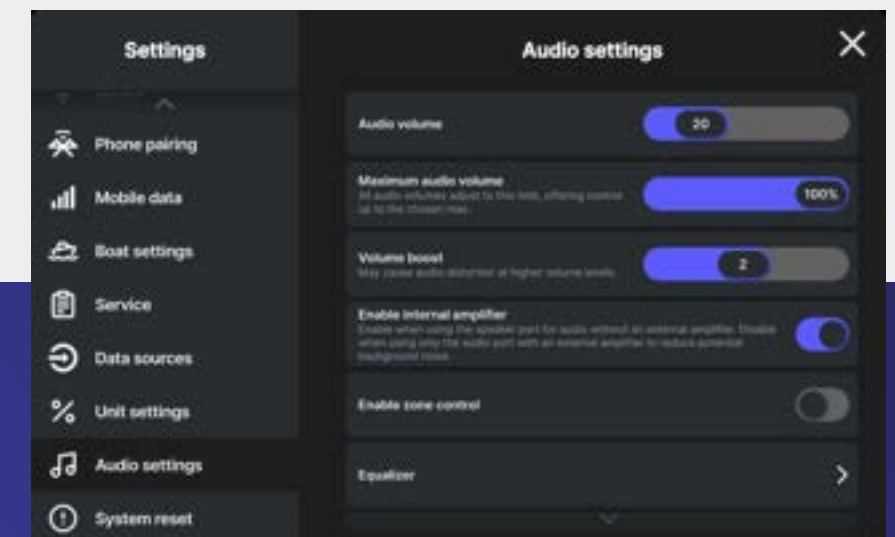
New scale bars for Windy

A new wind scale bar has been added, along with fine-tuned display settings for improved readability in different conditions.



Support for Italian, Turkish and Greek languages

Italian, Turkish, and Greek translations have been fully integrated, along with refinements to existing language sets.



Music & media updates

You can now disable the internal amplifier and control volume boost. The music app also fully supports 16" displays in picture-in-picture mode, and internet radio scanning has been optimized for better station detection.

Other improvements



Refreshed app icons

The side panel application icons have been given a refreshed look and feel.



Support for multiple Q Digital Switches

Among other improvements, it is now possible to add multiple Q Digital Switches to a single Q Display, increasing the number of digital switch appliances supported as needed.



Q Digital Switch switchbank steering

You can now control Q Digital Switch appliances using external physical switchbanks, offering more flexibility for traditional-style controls.

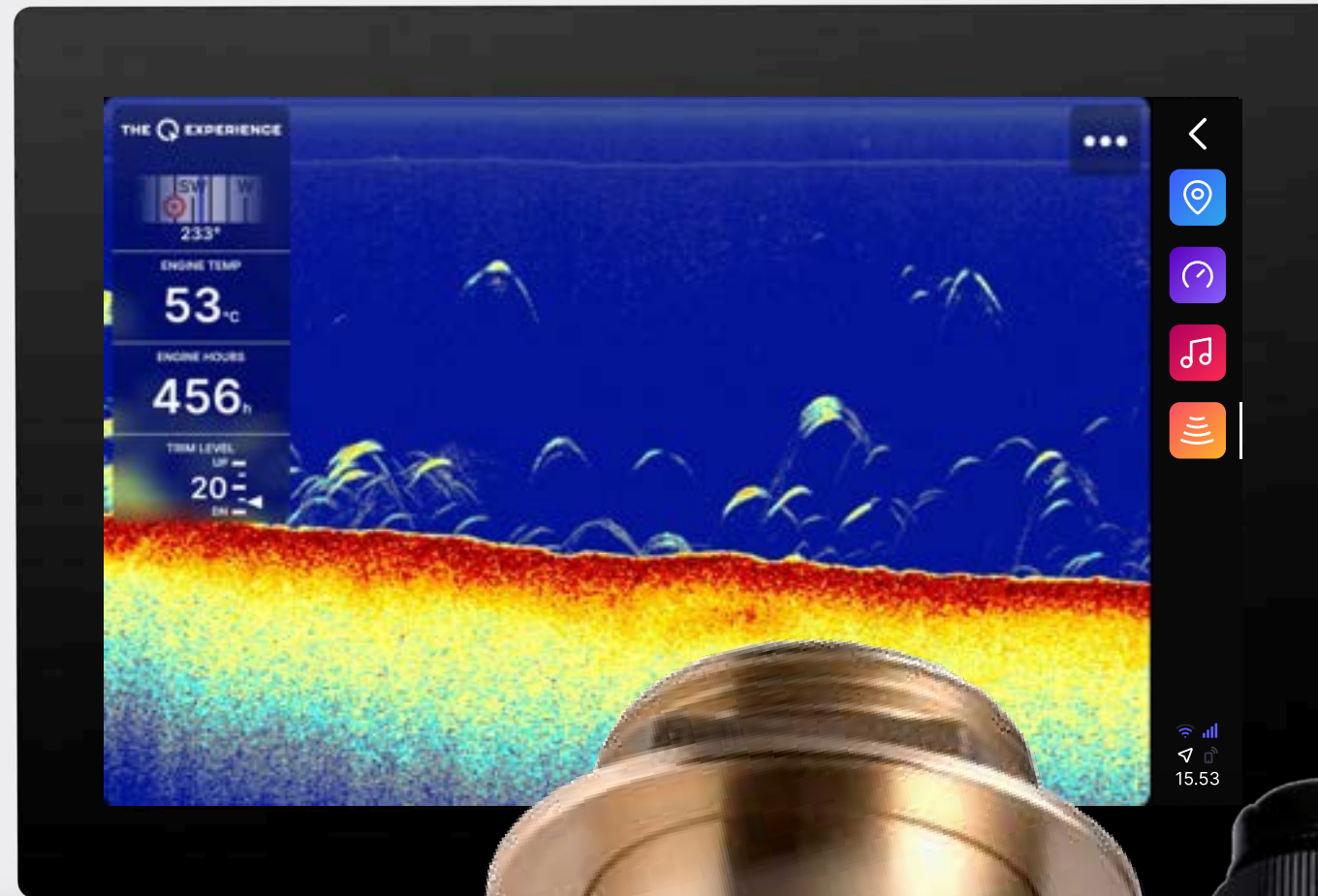
Integrations

The Q system now supports even a wider range of third-party integrations, enabling smooth communication with propulsion, power management, stabilization, and control systems.

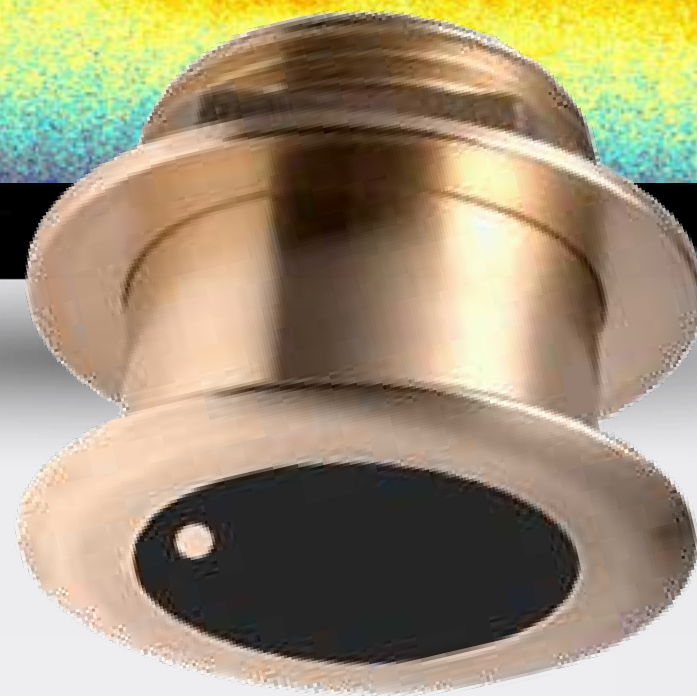


Piktronik, NT Systems and RAD dashboards available via partners

Fishfinder options



AIRMAR®
for Q



Airmar all-in-one CHIRP fishfinders

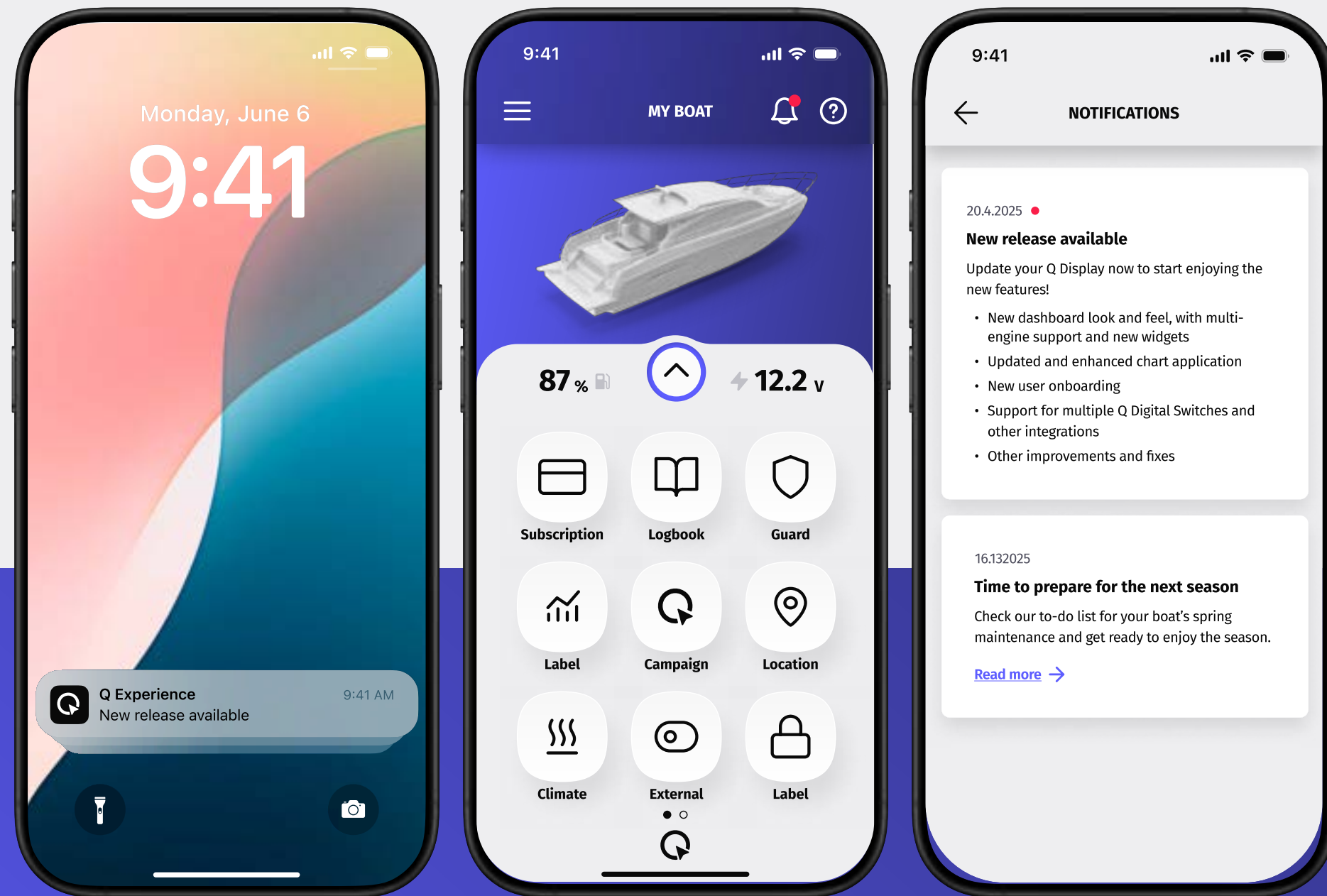
Simply plug them into the display, and they'll deliver crisp bottom details and clear fish target images. Available in both transom and thru-hull mounting options.

Medium CHIRP frequencies: 95-155 kHz

Depth range: 0.5 - 200 meters or 0.5 - 457 meters (1 kW)

Features: Depth, water temperature, bottom tracking, fish detection, "auto" mode for sensitivity, range and noise cancellation, zoom, and split screen.

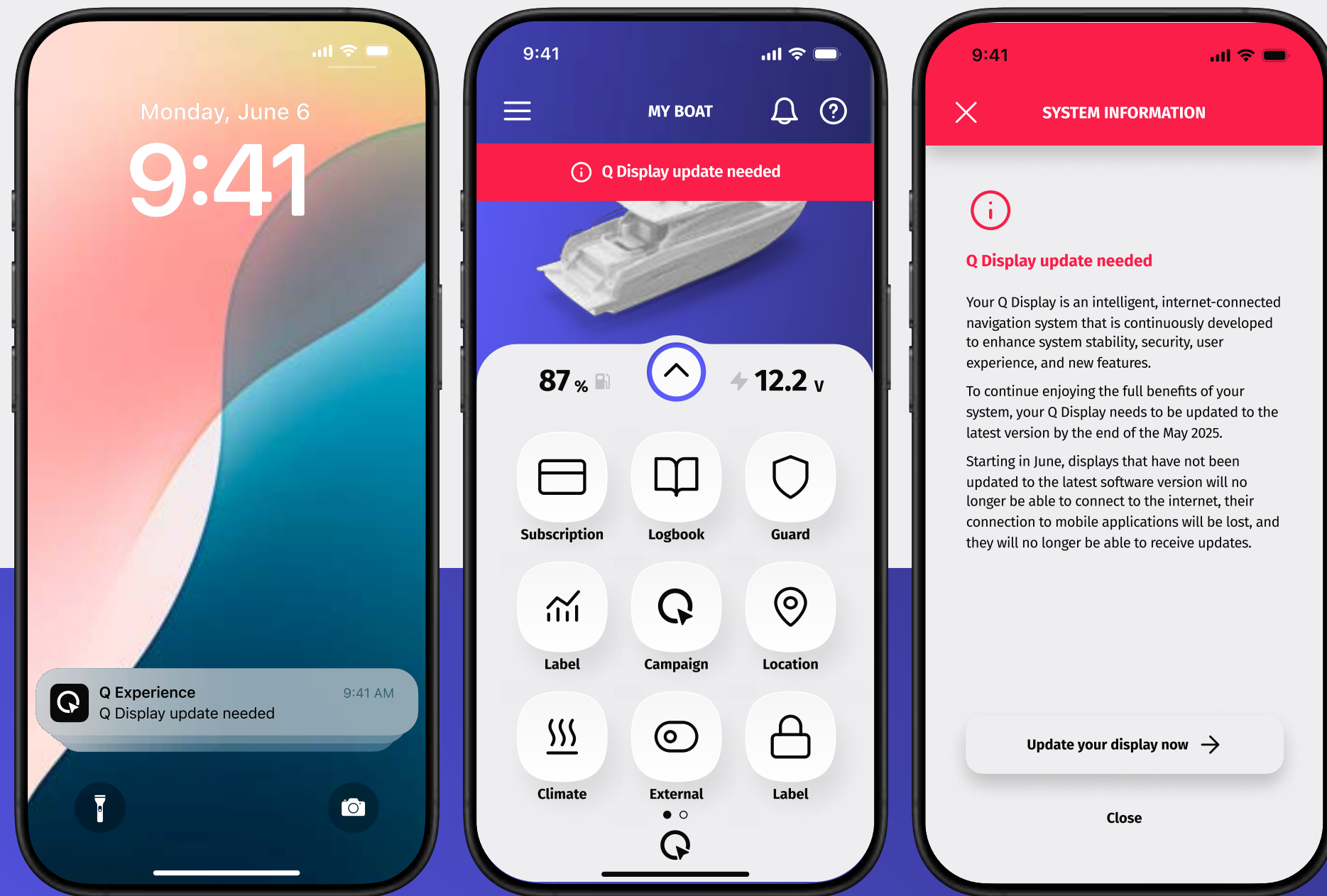
Notification center



Notification center

Stay informed about important updates, new features, and other relevant information concerning your system. The notification center ensures you never miss out on meaningful news - delivered straight to your Q App.

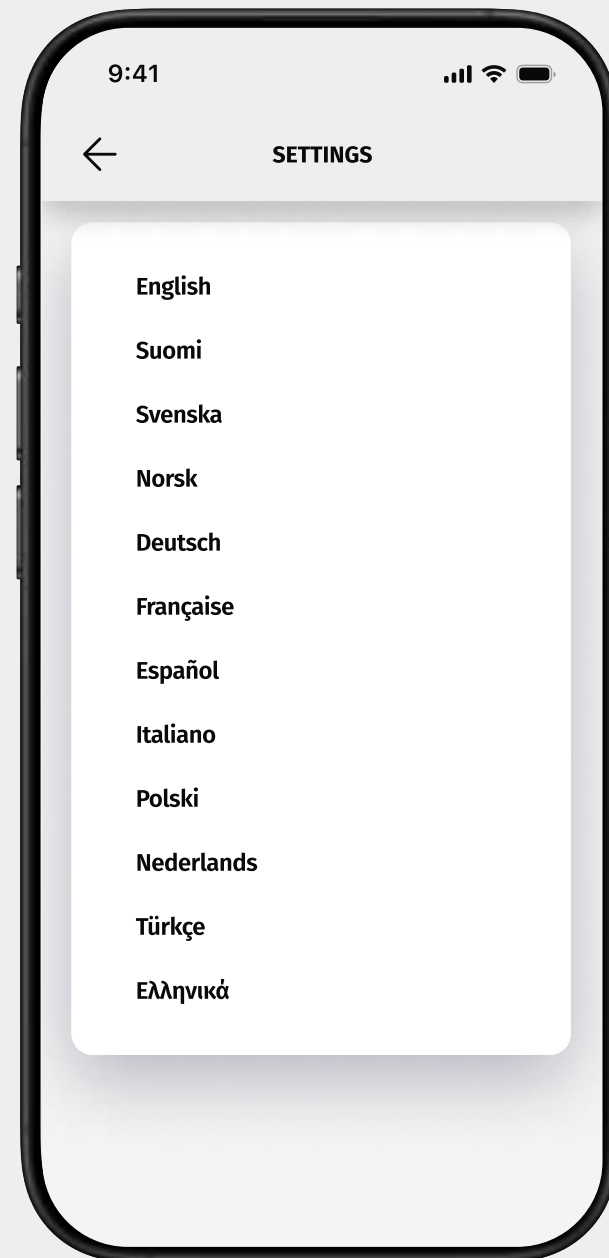
System information



Important system notifications

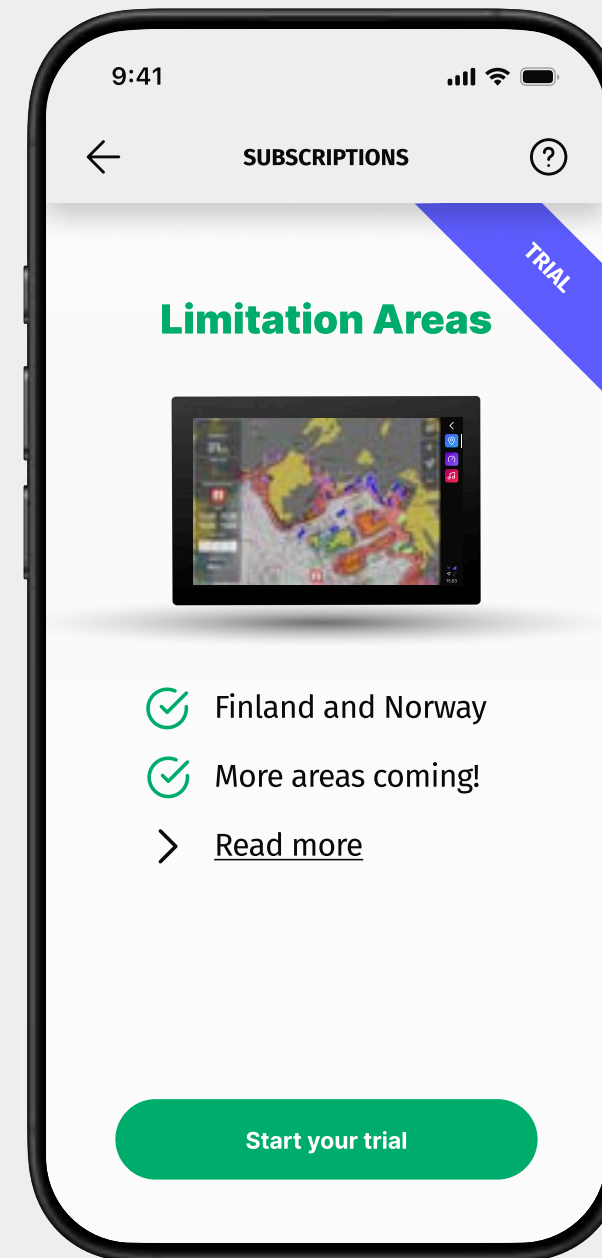
A new notification banner highlights important system updates and key Q system-related information - ensuring you stay informed about updates that shouldn't be missed.

Other improvements



Language support for Italian, Turkish and Greek

The app now includes full language support for Italian, Turkish and Greek.



Limitation areas for Norway

Norwegian limitation areas are now available as part of the subscription features.

Please note: To access this feature, your Q Display must be updated to the latest software version.

**Release available by
the end of April 2025**



by NEXTFOUR